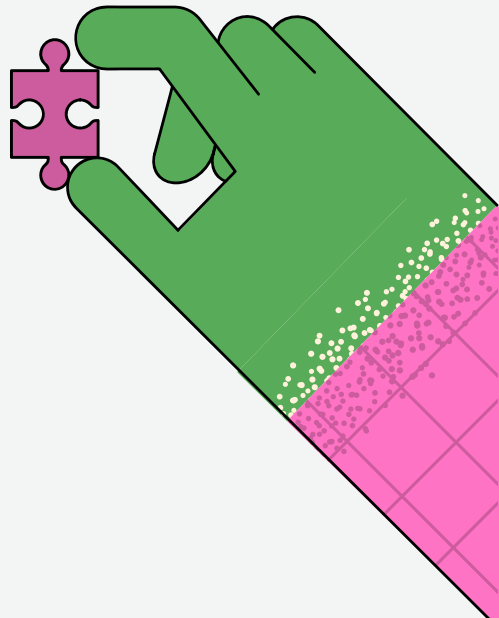
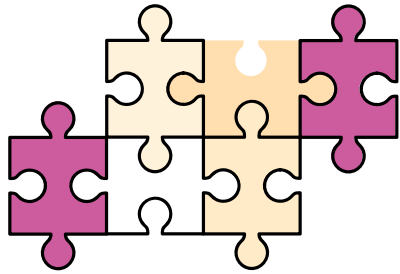


# Neurodiversity and SEND Support Information for Parents.

“The world needs  
all kinds of minds.”

Temple Grandin





## Welcome

At Wimbledon High School, we are committed to fostering an inclusive and empowering environment for every girl.

Our Neurodiversity and SEND provision is designed to offer purposeful, tailored support that enables students to thrive academically, socially, and emotionally.

We work from two complementary principles:

**Inclusion by Design** – creating learning environments and experiences accessible to all.

**Adaptive Teaching** – responding flexibly to individual needs as they evolve.

Our goal is to equip every student with confidence, independence, and the skills needed for life beyond school.

## Meet the Neurodiversity and SEND Team



**Martyna Sobczak Roberts**  
*Head of Neurodiversity  
and SENCO*

Neurodiversity Mentor  
for Years 11 and 13  
[m.sobczak-roberts@wim.gdst.net](mailto:m.sobczak-roberts@wim.gdst.net)



**Candice Cheers**  
*Assistant SENCO (Part time)*

Neurodiversity Mentor  
for Years 7 and 12  
[Candice.Cheers@wim.gdst.net](mailto:Candice.Cheers@wim.gdst.net)



**Ela Auty**  
*Assistant SENCO*

Neurodiversity Mentor  
for Years 8, 9 and 10  
[e.auty@wim.gdst.net](mailto:e.auty@wim.gdst.net)



**Catherine Shaw**  
*Neurodiversity Assistant*

Lead for Neurodiversity  
Administration  
[Catherine.Shaw@wim.gdst.net](mailto:Catherine.Shaw@wim.gdst.net)



## Our Neurodiversity Space

A calm, welcoming, and sensory-friendly area where students can:

- Take sensory or movement breaks
- Reset and regulate emotions
- Re engage with learning in a supportive setting

## Neurodiversity Champions

Across departments, dedicated staff members share strategies, tools, and subject specific approaches. This ensures that inclusive practice is embedded in every lesson and every classroom.

## What We Offer

Through the SENCO and Assistant SENCOs, we provide targeted, practical support tailored to each student's needs. Support may include:

- Study skills and revision strategies for senior school learning
- Literacy support
- Social communication and interaction support
- Emotional regulation strategies
- Executive function coaching (organisation, planning, time management)
- Use of assistive technologies for learning

Support is always shaped by each girl's current barriers to learning. As needs evolve, the support offered may change to ensure it remains relevant, effective, and empowering.

## Upcoming Event

# Neurodiversity Celebration Week

16–20 March

A week dedicated to awareness, understanding, and appreciation of the diverse ways our students learn and experience the world.

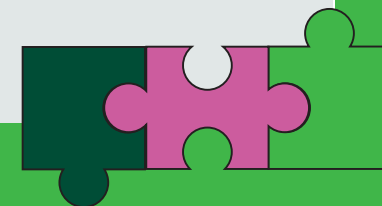
## Our Commitment

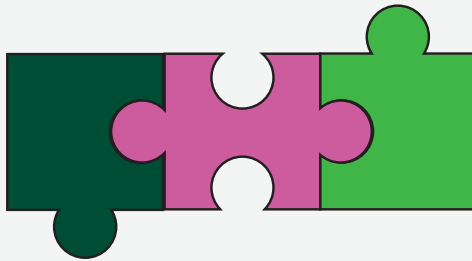
We aim to support every girl through her school journey and prepare her for independence beyond Wimbledon High.

We believe that recognising and celebrating neurodivergence enriches our community and strengthens our shared learning experience.

**For further information or to get in touch with the team, please contact the school's Neurodiversity and SEND department.**

*[neurodiversity@wim.gdst.net](mailto:neurodiversity@wim.gdst.net)*





WIMBLEDON  
HIGH SCHOOL

---

GDST