



WIMBLEDON HIGH JUNIOR SCHOOL

Stepping In

2026-27

We aim for every girl
to feel known, supported,
confident and able to shine
at Wimbledon High.

 WIMBLEDON
HIGH SCHOOL
JUNIORS

GDST

“Though she
be little,
she is fierce.”

A Midsummer Night's Dream,
Act 3 Scene 2



Welcome to the Junior School at WHS



A very warm welcome to the WHS community!
We are delighted that your daughter will be joining us, and we look forward to getting to know her as she begins this exciting new chapter.

Starting school is a significant milestone in a child's life, and we are committed to making the beginning of your daughter's journey with us a positive, memorable, and seamless transition. Choosing a school is one of life's most important decisions.

We understand the trust you place in us, and we take our responsibility very seriously - to nurture your daughter's happiness, wellbeing, and academic progress throughout her time with us.

The Junior School Spirit

At WHS, our ethos is rooted in Girls First, always. We are a community united by purpose, where every decision we make is guided by what is best for the girls in our care. We believe in creating a joyful, respectful, and collaborative environment where every girl feels seen, heard, and valued.

Our philosophy of **Playful Scholarship** encourages serious thinking through joyful exploration. We believe that curiosity, creativity, and play are essential to deep learning, and we model this approach in everything we do. As a progressive school, we are always evolving, embracing innovation while staying true to our values.

We celebrate individuality through our **This is Me** approach, encouraging each girl to embrace her unique strengths, interests, and personality. Our pastoral care is proactive and preventative, not just responsive, ensuring that every girl feels safe, supported, and empowered to thrive.

Beyond the classroom, our commitment to Charities, Partnerships and Adventures helps shape global citizens in the making. Through meaningful experiences and connections, our girls learn to lead with empathy, act with integrity, and engage with the world around them.

This is
ME!



Harriet Fryer
Head of Junior School



Stepping In Guide

This booklet contains the essential ‘nuts and bolts’ - the practical information you need to feel well-informed and well-prepared ahead of the start of the academic year.

Over time, we’ve refined this guide to ensure it answers the most common questions and helps you feel confident as your daughter steps into school life. Once term begins, you’ll gain

access to Firefly, our parent intranet system, which houses all the detailed information you’ll need, including our comprehensive Parent Booklet.

By joining WHS, you’ve become part of a community built on positivity, respect, collaboration, and joy. We are so pleased to welcome you, and we can’t wait to begin this journey together.



Communication

Term dates are published on our website and the Junior School calendar is available on SOCS*

Our Junior School Parent Booklet is published at the beginning of each term and contains a wealth of useful information pertaining to the academic, pastoral and co-curricular life of the school as well as staff contact details.

Key dates and important information about upcoming events are shared in our weekly School Post bulletin sent via email every Wednesday morning. Updates on Junior School life from the Head of Junior School are published on Friday afternoons at regular intervals during the academic year.

*School Online Communication System.



Reporting or requesting absence

If your daughter is absent unexpectedly due to illness, please call the Junior School Office on 020 8971 0902 or email junior.absence@wim.gdst.net

Details of our term dates are published on our website well in advance and term-time absence is strongly discouraged. Should you need to request absence in extenuating circumstances, please write to Harriet Fryer, Head of Junior School via her PA, Jo Sandys, joanna.sandys@wim.gdst.net

The School Day

Our school day starts at 8.20am each day and ends at 3.15pm for Lower Junior School and 3.30pm for Upper Junior School.

Morning drop off and afternoon pick up

Our central location in Wimbledon means that there are plenty of public transport options for families to consider including bus, tube, mainline train and tram. Many families who live nearby choose to walk, bike or scoot to school and we have plenty of bike and scooter shelters available.

We encourage sustainable travel to and from school and have created a Parent School Agreement, included in your induction pack, which provides details and recommendations for sustainable travel.

The playground is supervised by a member of the Junior Leadership Team from **8.15am** every morning. This means parents can drop their daughter off at the Mansel Road gate safe in the knowledge that she will be supervised until she enters the classroom. Girls should be dropped to school at **8.20am** and registration takes place at **8.30am**, at which points all gates will close.

If you arrive after 8.30am, please ring the bell on the gate and report to the Junior School Office to sign your daughter in.

Lower Junior School pupils (Reception, Years 1 and 2) are dismissed directly to parents and carers on the playground at 3.15pm and Upper Junior School pupils (Years 3 - 6) at 3.30pm.

Uniform

Our uniform and sports kit supplier is School Blazer www.schoolblazer.com

In addition to this, *Friends of Wimbledon High School (FoWHS)* run a second-hand uniform shop which aims to be open every Friday afternoon during term time, from 3.30 - 4.30pm.



Full details of the uniform are available here.

Break and lunchtimes

Pupils in Lower Junior School are provided with a fresh fruit snack each morning at break time. Pupils in Upper Junior School are invited to bring a nutritious nut-free snack with them to enjoy at break time.

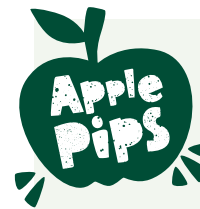
School Lunch is compulsory for all Junior School pupils and the cost is added to and collected with the school fees. Allowance is made for school visits and there is no lunch on the last day of each term (when we finish at midday). Packed lunches are not permitted.

IF YOUR DAUGHTER HAS FOOD ALLERGIES OR RELIGIOUS PREFERENCES, PLEASE COMPLETE THE HEALTH FORM AND ALLERGIES AND INTOLERANCE FORM IN HER CHECKLIST ITEMS.

Pupils in Reception and Year 1 are served their meal each day and pupils in Years 2-6 select their meal on a canteen basis from a weekly menu.

Staff members supervise the younger girls, encouraging them to try unfamiliar foods and to ensure that each pupil has a balanced meal. The menus are published on Firefly.

All pupils have time for free play at both morning break and lunch, supervised by Junior School staff. A range of playtime equipment is available.



For parents who require greater flexibility in drop-off and pick-up times

around the school day, we offer Apple Pips wrap around care, providing a fun, relaxed environment for pupils.

Apple Pips is our in-house facility, run on-site by our own experienced staff.

Activities include crafts, games, and role play. Provision to complete homework is available to pupils joining Apple Pips from the Upper Junior school.



Before School Care
<p>Monday to Friday (does not include breakfast)</p> <p>One session: 7.45 - 8.20am</p>
After School Care
<p>Monday - Thursday</p> <p>Flexible sessions are available between 3.30 and 6.00pm</p> <p>Friday</p> <p>One session: 3.30 - 4.30pm</p> <p><i>See link below for further details and pricing</i></p>

Sisters' Waiting

Sisters' Waiting is a provision for families who have children in both the Lower Junior School (R-Y2) and Upper Junior School (Y3-Y6). Younger sisters are supervised from 3.15pm to 3.30pm while they wait for their older sister to finish her day, enabling parents/carers to collect siblings at the same time. (There is no fee for this service).



For further information on Apple Pips and how to book, please scan here.





What should I expect if my daughter is unwell or incurs an injury whilst at school?



Our School Nursing Team is based in the Medical Room during school hours. All staff are regularly trained to administer basic First Aid. A number of staff throughout the school have undertaken more advanced training. They are on call should the nurse not be available. Lunchtime supervisors and teaching assistants carry First Aid kits to deal with minor injuries sustained in the playground. PE staff are trained to deal with injuries that may occur during lessons. The nurse will be called if they consider it necessary.

The nurses are not concerned solely with physical wellbeing, and are always happy to see pupils and listen to their concerns.

They have many resources at their disposal and are always available to meet parents to discuss matters that affect your daughters.



Junior School Contacts

Junior Leadership Team

Mrs Harriet Fryer	Head of Junior School	h.fryer@wim.gdst.net
Mrs Sarah Chittenden	Deputy Head of Junior School	s.chittenden@wim.gdst.net
Mrs Kate Cheetham	Assistant Head Pastoral Upper Junior School	k.cheetham@wim.gdst.net
Mrs Alexandria Rowland	Assistant Head Pastoral Lower Junior School	a.rowland@wim.gdst.net
Miss Elizabeth Jenkins	Assistant Head Academic and Innovation	e.jenkins@wim.gdst.net
Mrs Sarah Brierley	Assistant Head Co-Curricular and Partnerships	sarah.brierley@wim.gdst.net

Junior School Administration

PA to Head of Junior School/ Secretary	Jo Sandys	joanna.sandys@wim.gdst.net
Admin Assistant	Sandra Donegan	info.juniors@wim.gdst.net

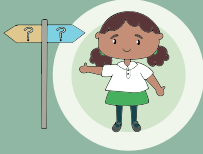
Curiosity



Respect
& Responsibility



Adaptability



This is Me

Pastoral care is at the heart of everything we do. We use our **This is Me** characters to instill in our girls the importance of developing all of these characteristics:



Courage
& Self Belief



Creativity



Independence
& Initiative



Reflectiveness



Risk Taking



Cooperation
& Kindness



Resilience
& Perseverance

WIMBLEDON
HIGH SCHOOL
JUNIORS
GDST

Wimbledon High School
Mansel Road, London,
SW19 4AB

Head Junior School
Mrs Harriet Fryer

Contact
020 8971 0902
info@wim.gdst.net
wimbledonhigh.gdst.net